

EMS

Application

- It is applicable to household water supply, equipment support, pipeline pressurization, garden watering, vegetable greenhouse watering, fish farming and poultry raising, industrial and mining, water supply and drainage of enterprises and high-rise buildings, central air conditioner and centralized heating circulation system, etc.

Pump

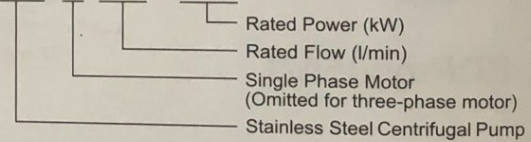
- AISI 304 pump body
- AISI 304 shaft
- Max. liquid temperature: +85 °C
- Altitude: up to 1000 m

Motor

- C&U bearing
- Motor with copper winding
- Built-in thermal protector for single phase motor
- Insulation class: F
- Protection class: IPX4
- Max. temperature: +40 °C

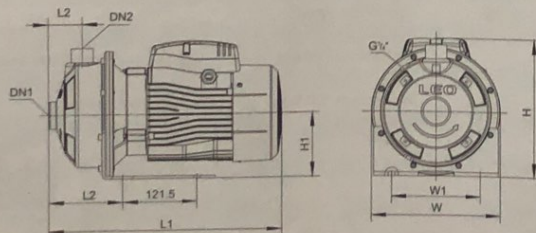
Identification Codes

EMS m 70 / 0.37



Technical Data

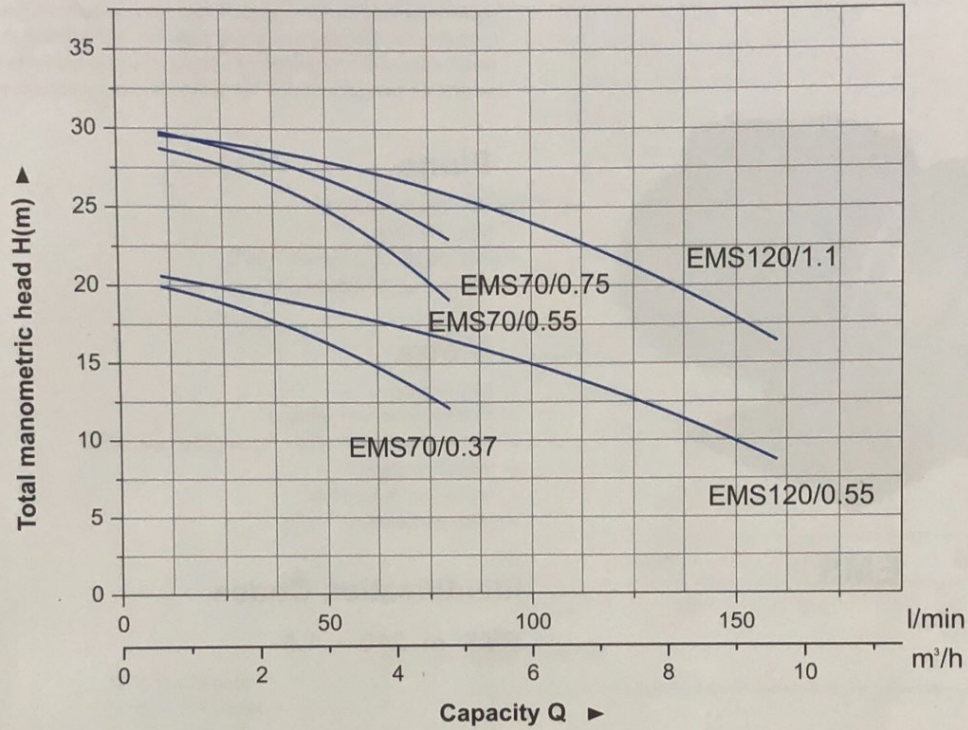
MODEL		POWER		l/min	0	30	40	60	80	100	120	140	160	180
Single Phase	Three Phase	kW	HP	m ³ /h	0	1.8	2.4	3.6	4.8	6	7.2	8.4	9.6	10.8
EMSm70/0.37	EMS70/0.37	0.37	0.5	H (m)	20.9	19.0	18.1	15.7	12.1	-	-	-	-	-
EMSm70/0.55	EMS70/0.55	0.55	0.75		29.5	27.3	26.3	23.4	19.1	-	-	-	-	-
EMSm70/0.75	EMS70/0.75	0.75	1.0		30.4	28.5	27.8	26.0	23.0	-	-	-	-	-
EMSm120/0.55	EMS120/0.55	0.55	0.75		21.2	-	-	17.9	16.6	15.1	13.3	11.2	8.7	-
EMSm120/1.1	EMS120/1.1	1.1	1.5		20.2	-	-	26.7	25.1	23.3	21.2	19.0	16.4	-



Dimension

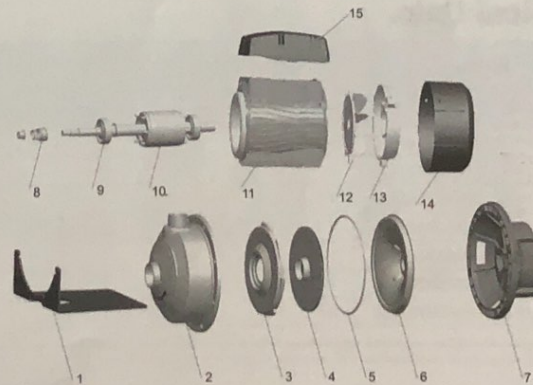
Model	Ports		L (mm)	W (mm)	H (mm)	L ₁ (mm)	L ₂ (mm)	W ₁ (mm)	H ₁ (mm)
	DN1	DN2							
EMS70/0.37	1 1/4"	1"	332	210	224	119	55	149	110
EMS70/0.55	1 1/4"	1"	332	210	224	119	55	149	110
EMS70/0.75	1 1/4"	1"	381	210	234	119	55	149	110
EMS120/0.55	1 1/4"	1"	332	210	224	119	55	149	110
EMS120/1.1	1 1/4"	1"	381	210	234	119	55	149	110

Hydraulic Performance Curve



Materials Table

No.	Part	Material
1	Bottom support	Steel
2	Pump body	AISI 304
3	Diffuser	AISI 304
4	Impeller	AISI 304
5	O-ring	NBR
6	Airproof plate	AISI 304
7	Support	ZL102
8	Mechanical seal	Silicon/carbon
9	Ball bearing	
10	Rotor	
11	Stator	
12	Fan	PP
13	Rear housing	ZL102
14	Fan cover	PP
15	Terminal box	ABS



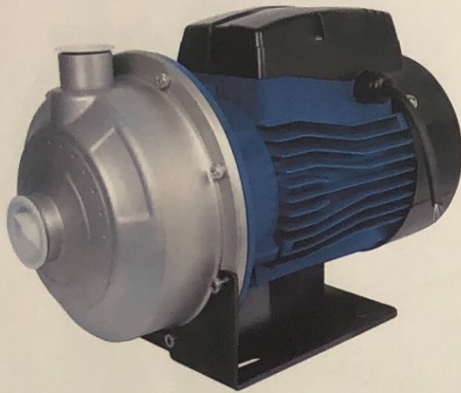
Package Information

Model	GW (Kgs)	L (mm)	W (mm)	H (mm)	Quantity (PCS/20 TEU)
EMS70/0.37	10	380	240	270	1200
EMS70/0.55	11	380	240	270	1200
EMS70/0.75	14	410	240	270	1104
EMS120/0.55	11	380	240	270	1200
EMS120/1.1	15	410	240	270	1104



Application

- It is applicable to household water supply, equipment support, pipeline pressurization, garden watering, vegetable greenhouse watering, fish farming and poultry raising, industrial and mining, water supply and drainage of enterprises and high-rise buildings, central air conditioner and centralized heating circulation system, etc.



EMS

Pump

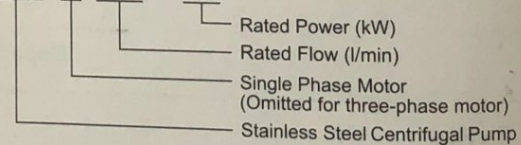
- AISI 304 pump body
- AISI 304 shaft
- Max. liquid temperature: +85°C
- Altitude: up to 1000 m

Motor

- C&U bearing
- Motor with copper winding
- Built-in thermal protector for single phase motor
- Insulation class: F
- Protection class: IPX4
- Max. temperature: +40°C

Identification Codes

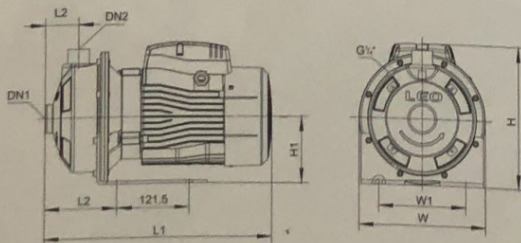
EMS m 210 / 1.5



Technical Data

MODEL		POWER		I/min																		
Single Phase	Three Phase	kW	HP	m ³ /h	0	1.8	3.6	6	7.2	8.4	9.6	10.8	12	15	18	21	24	26	29	31		
EMS210/0.75	EMS210/0.75	0.75	1.0	H (m)	16.8				15.6	15.2	14.8	14.2	13.6	11.9	9.8							
EMS210/1.1	EMS210/1.1	1.1	1.5		19.7				18.7	18.3	18.0	17.5	17.1	15.6	13.6							
EMS210/1.5	EMS210/1.5	1.5	2.0		24.2				23.5	23.2	22.8	22.4	21.8	20.2	18.0							
EMS210/2.2	EMS210/2.2	2.2	3.0		27.5				26.7	26.5	26.1	25.7	25.2	23.8	21.9							
EMS370/1.1	EMS370/1.1	1.1	1.5		15.4							14.7	14.4	13.5	12.3	10.8	8.9	7.6				
EMS370/1.5	EMS370/1.5	1.5	2.0		19.3								18.1	17.3	16.3	15.0	13.3	12.3	10.2			
EMS370/2.2	EMS370/2.2	2.2	3.0		23.1									21.7	20.9	20.0	18.8	17.2	16.2	14.2	12.3	

Dimension



Model	Ports		L (mm)	W (mm)	H (mm)	L ₁ (mm)	L ₂ (mm)	W ₁ (mm)	H ₁ (mm)
	DN1	DN2							
EMS210/0.75	1 1/2"	1 1/4"	392	210	234	129	55	149	110
EMS210/1.1	1 1/2"	1 1/4"	392	210	234	129	55	149	110
EMS210/1.5	1 1/2"	1 1/4"	440	210	250	129	55	149	110
EMS210/2.2	1 1/2"	1 1/4"	440	210	250	129	55	149	110
EMS370/1.1	2"	1 1/4"	392	210	234	129	55	149	110
EMS370/1.5	2"	1 1/4"	440	210	250	129	55	149	110
EMS370/2.2	2"	1 1/4"	440	210	250	129	55	149	110